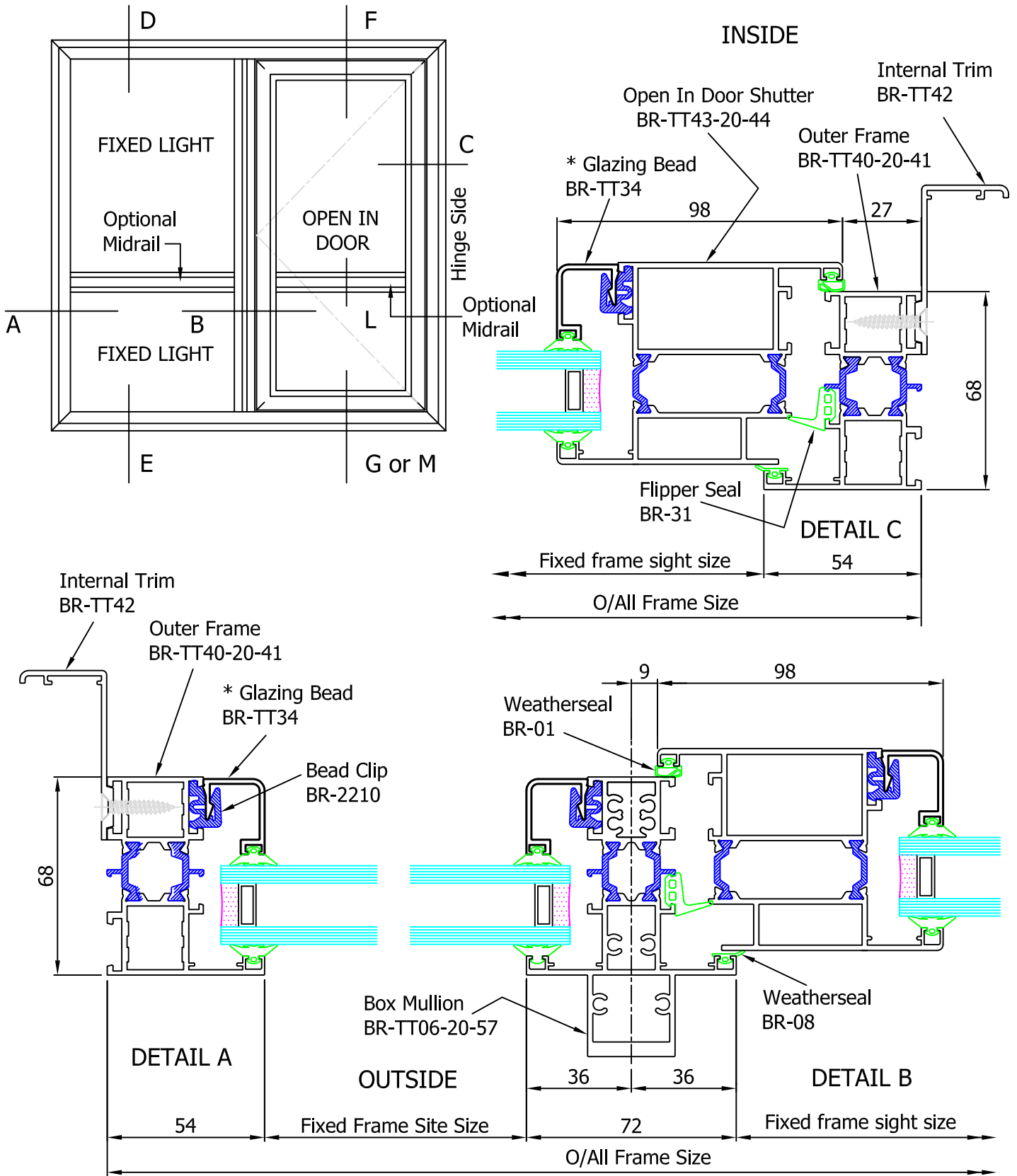
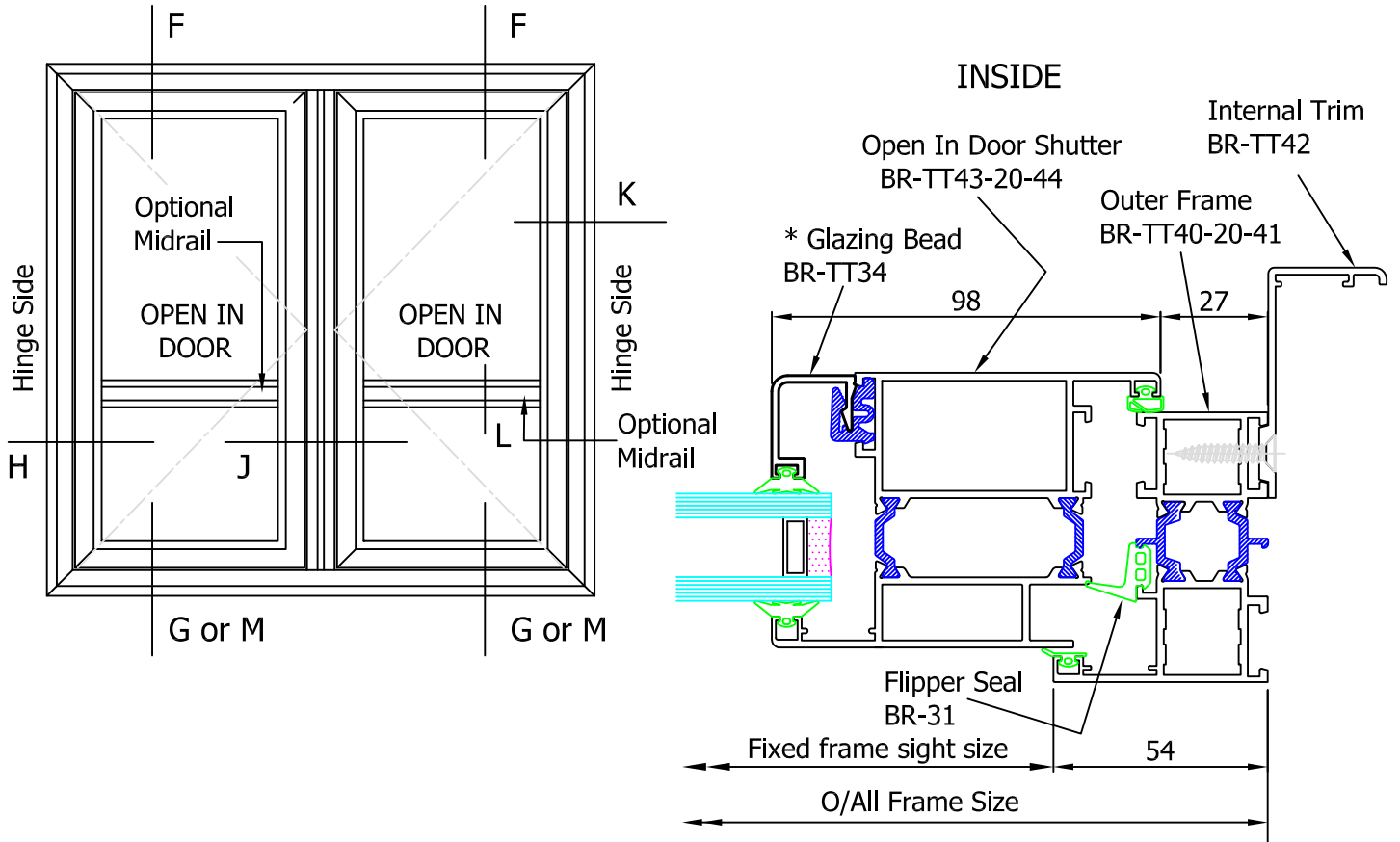


OUTSIDE ELEVATION AND HORIZONTAL SECTIONS

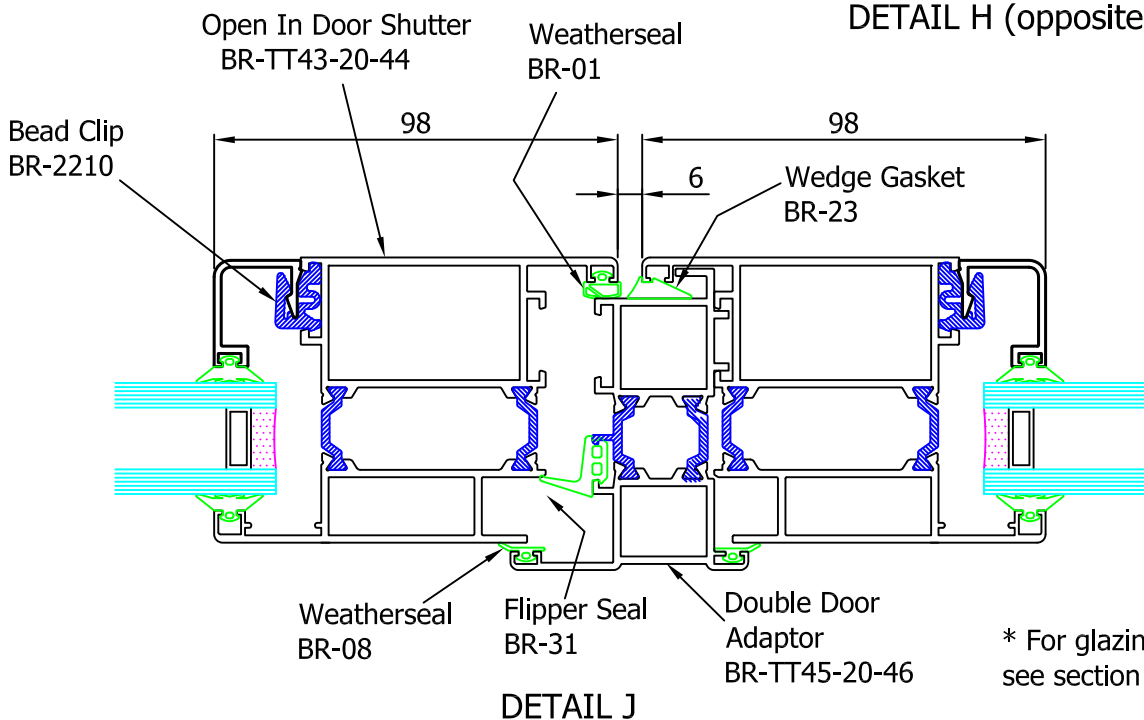


* For glazing options see section 9 of this manual.

OUTSIDE ELEVATION AND HORIZONTAL SECTIONS



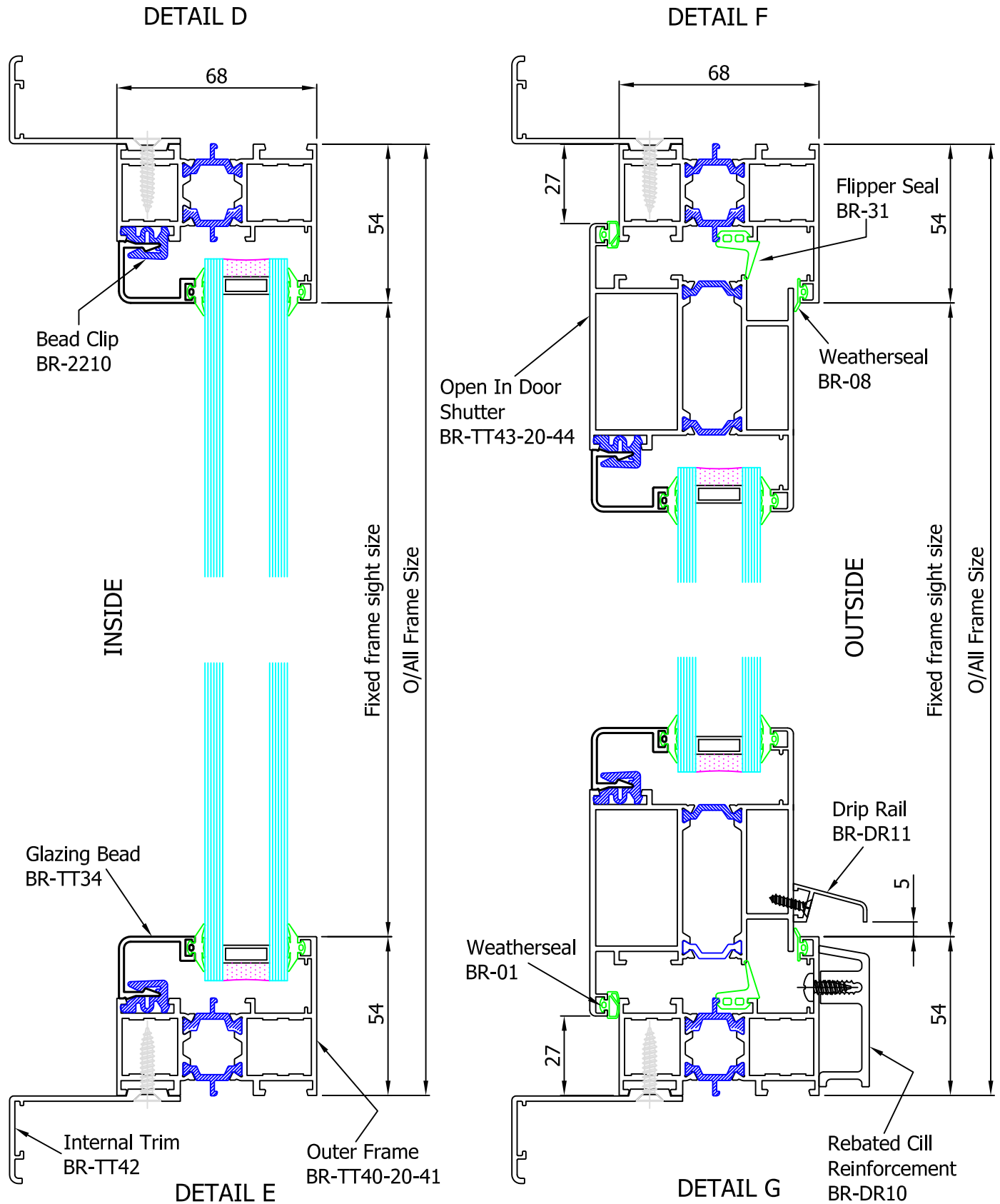
DETAIL K
DETAIL H (opposite hand)



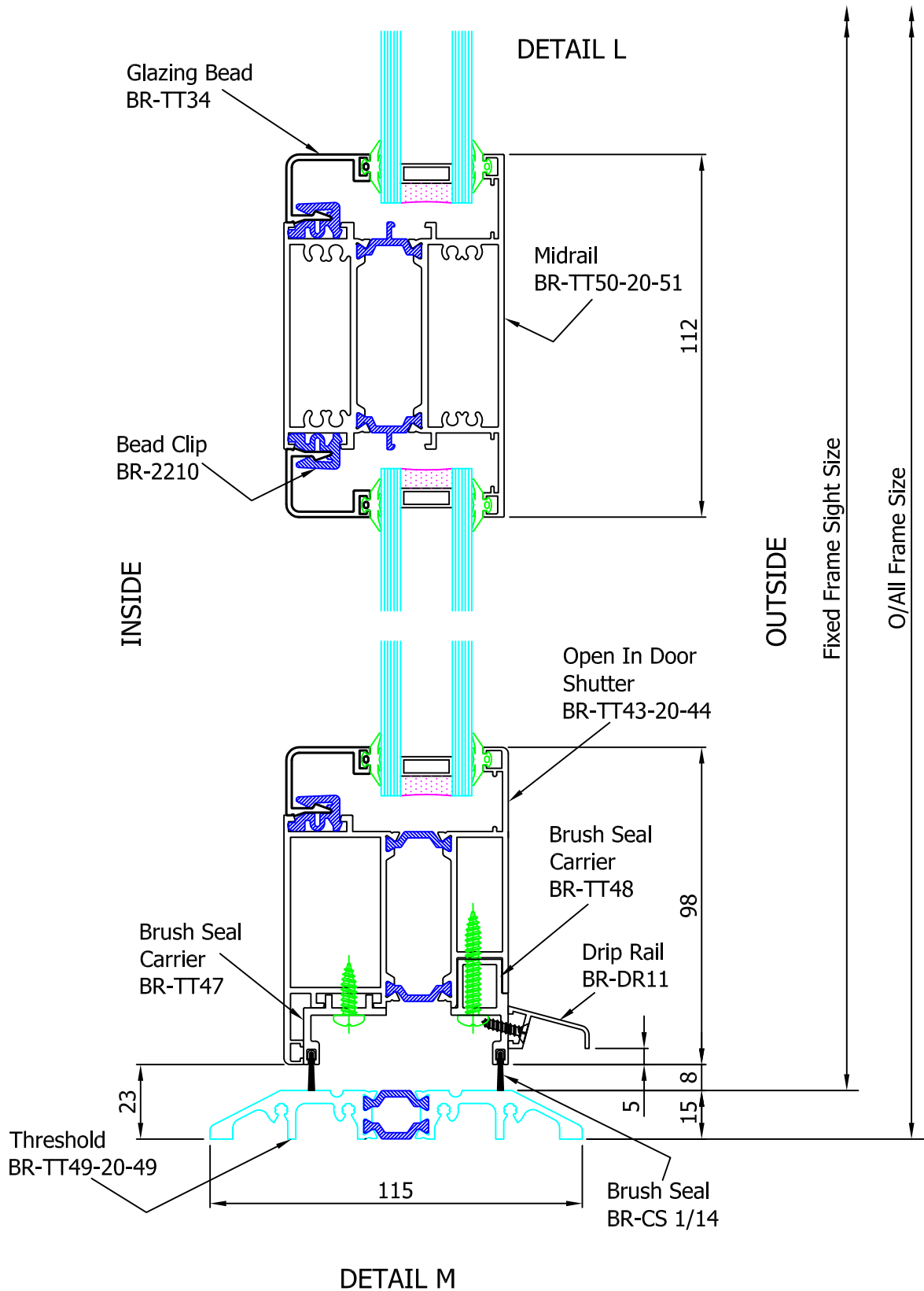
* For glazing options see section 9 of this manual.

OUTSIDE

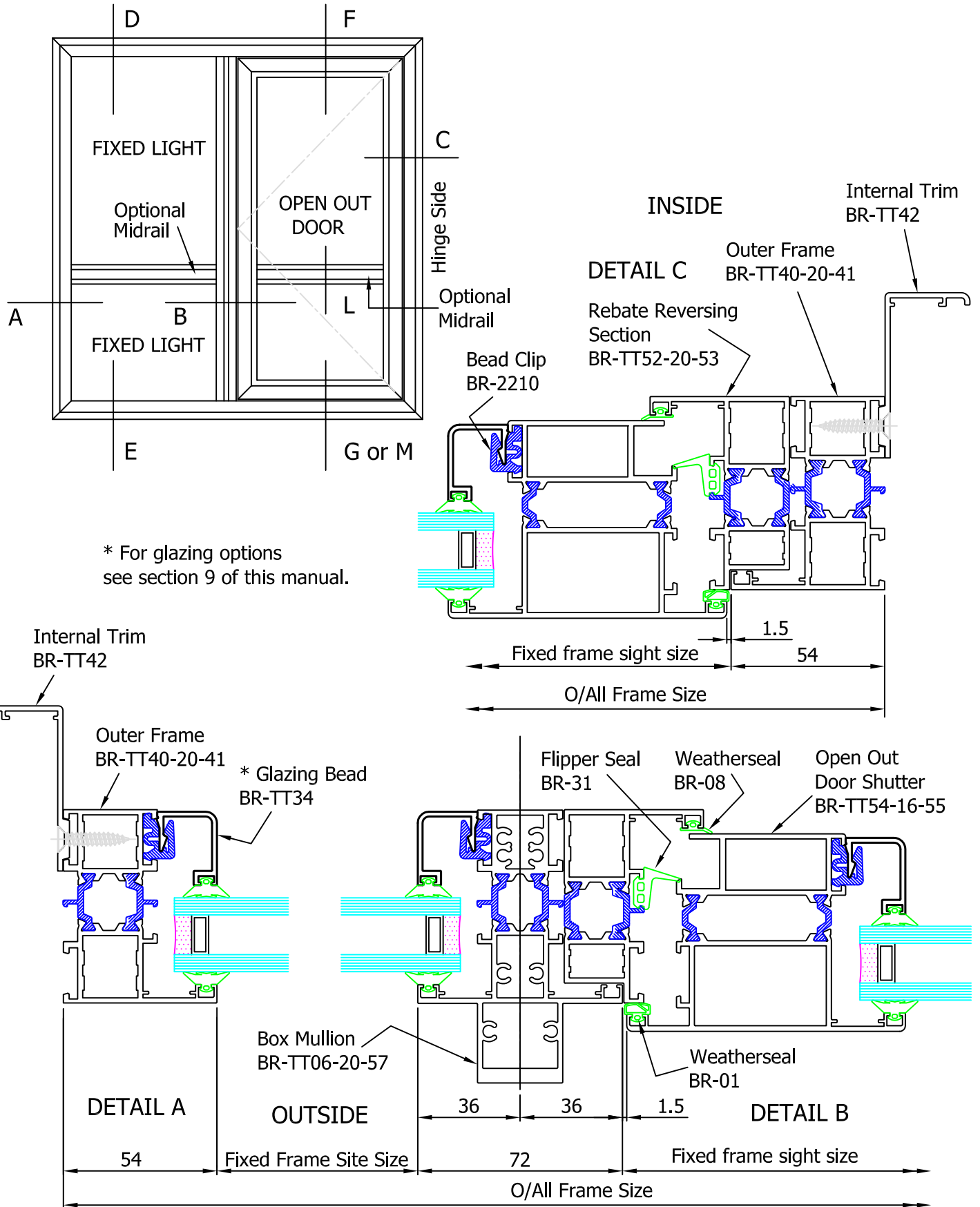
VERTICAL SECTIONS



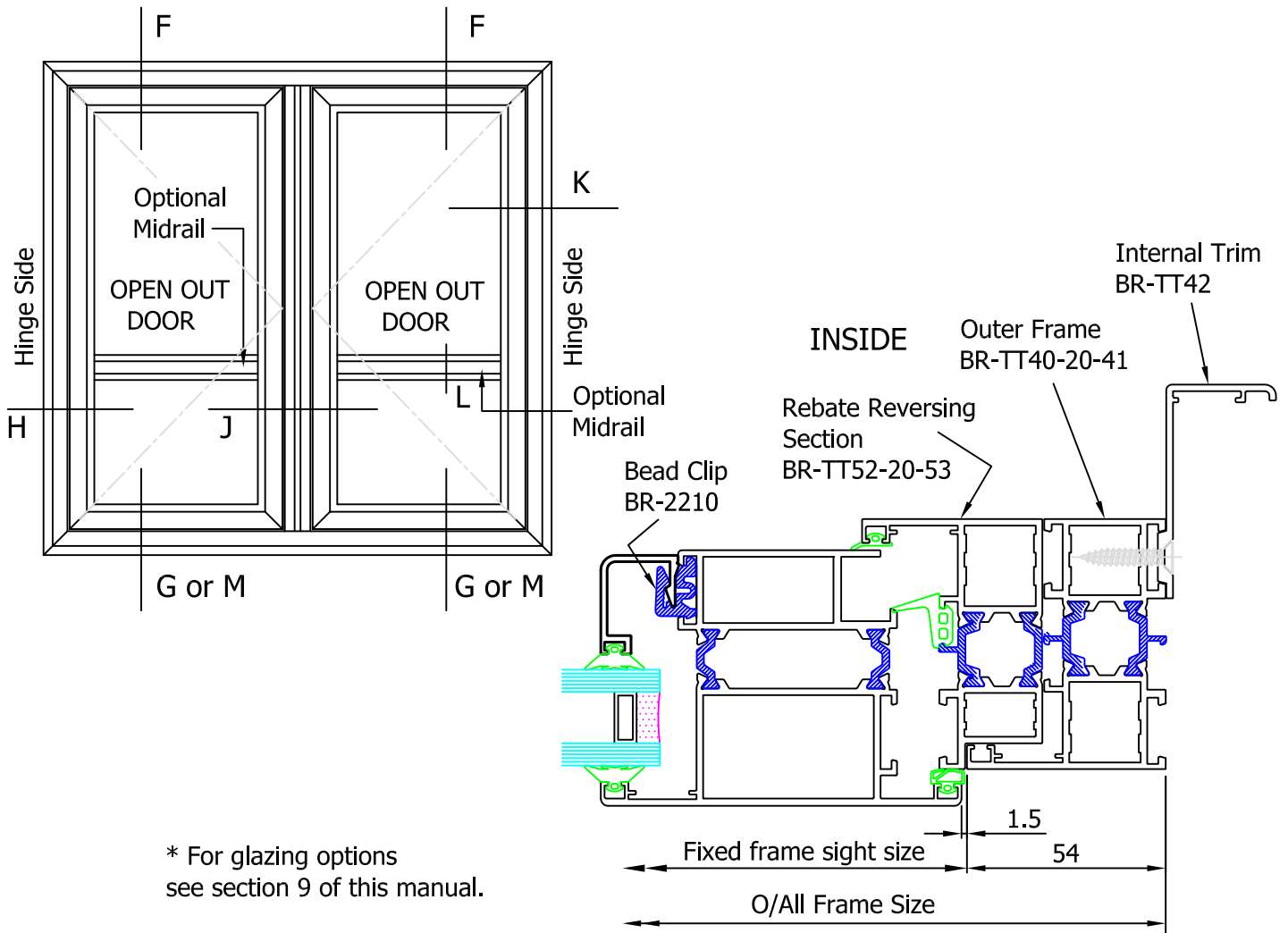
VERTICAL SECTIONS



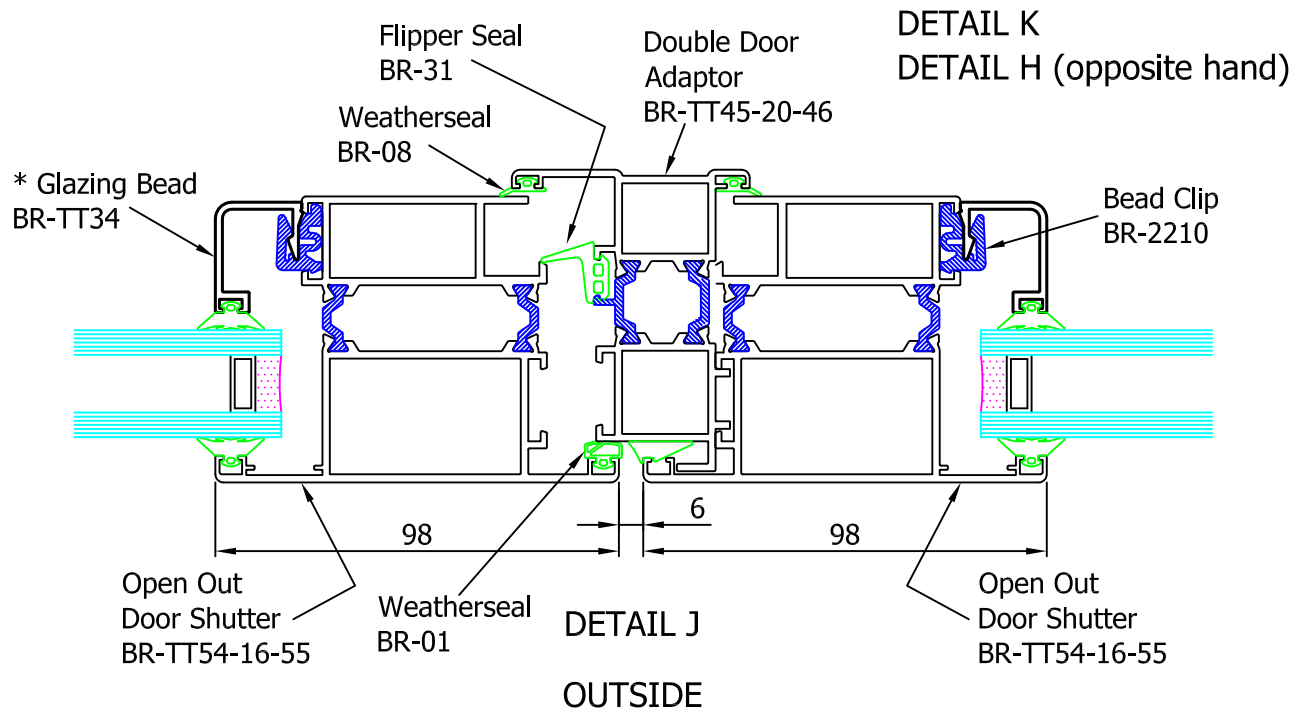
OUTSIDE ELEVATION AND HORIZONTAL SECTIONS



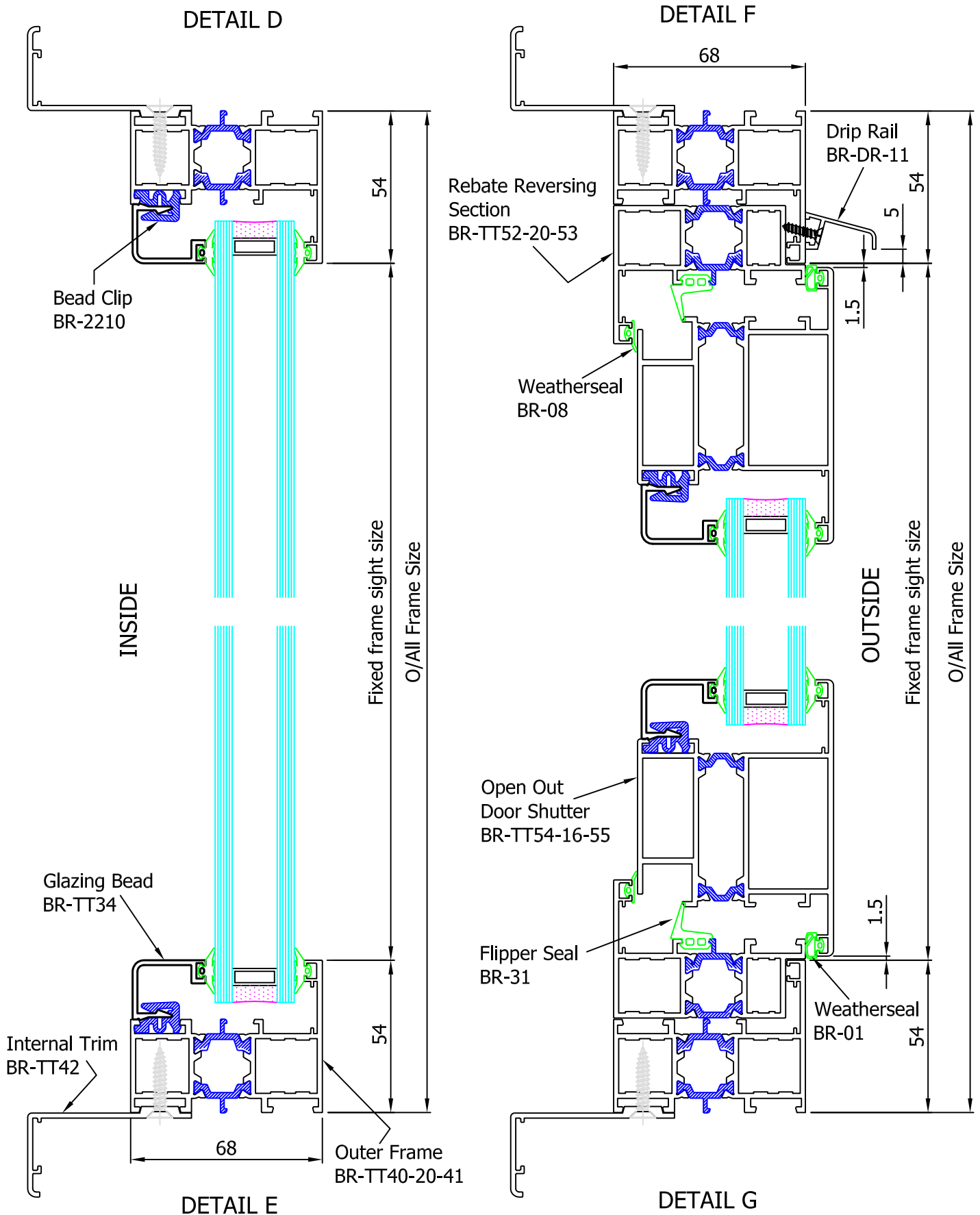
OUTSIDE ELEVATION AND HORIZONTAL SECTIONS



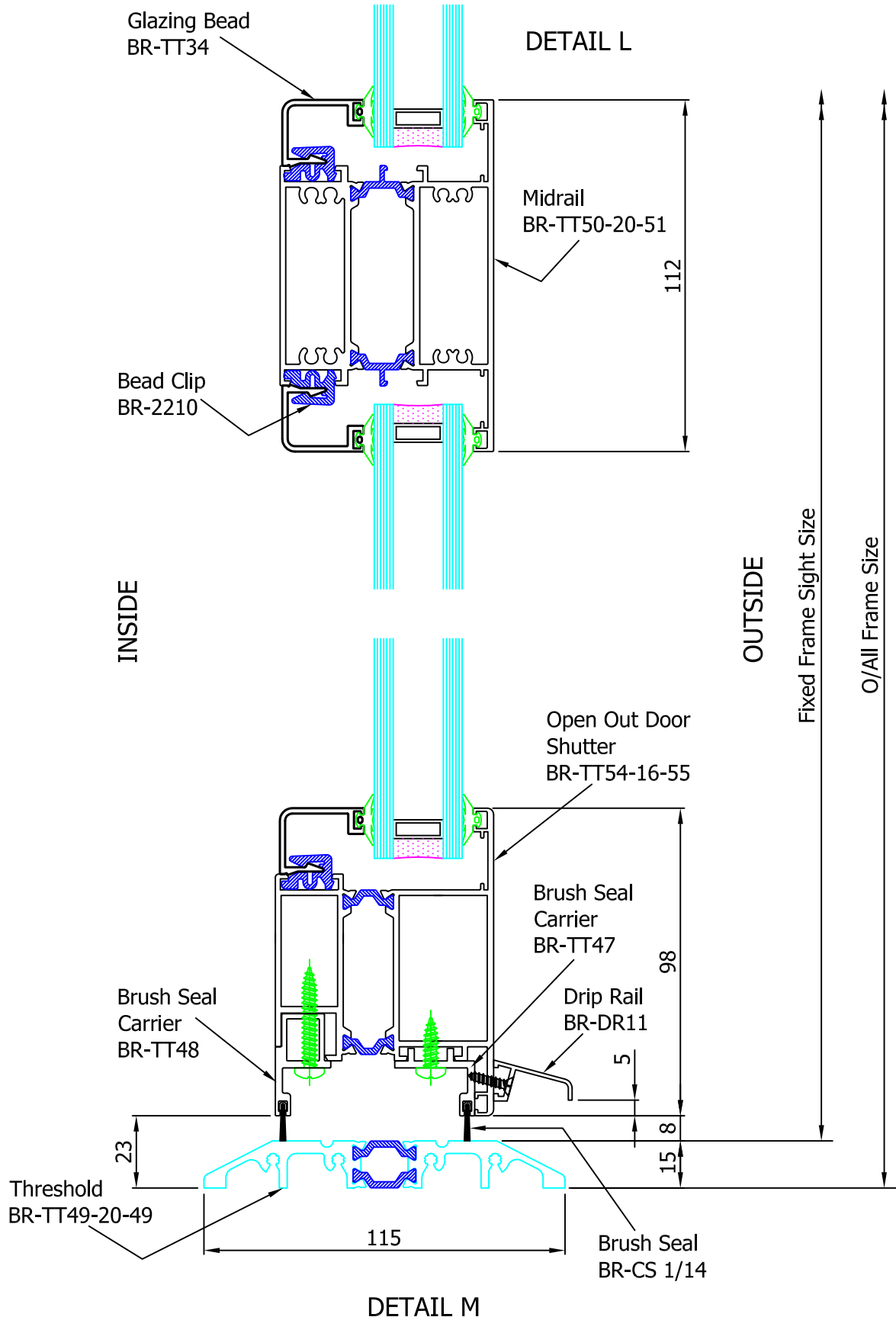
* For glazing options see section 9 of this manual.



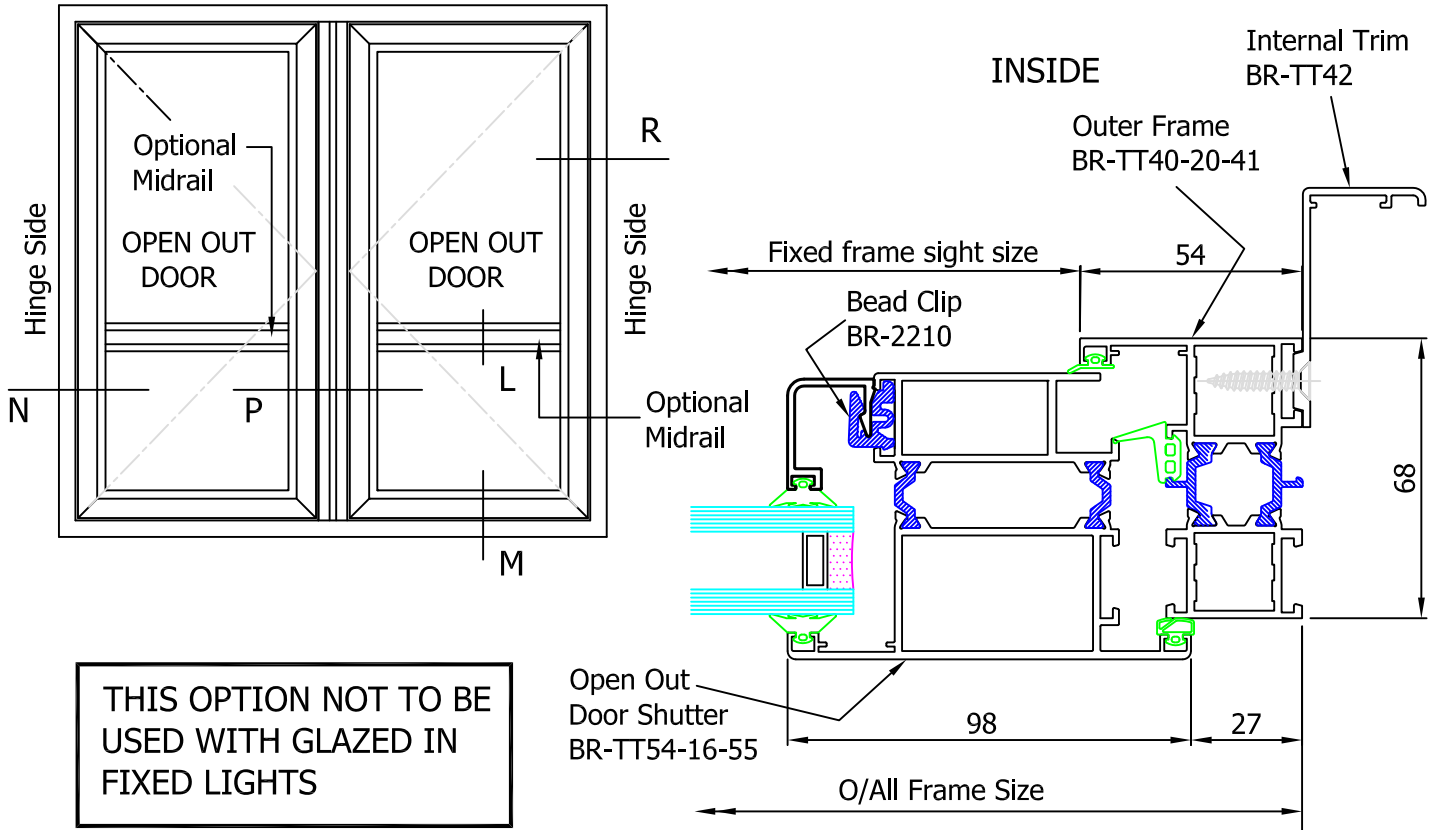
VERTICAL SECTIONS



VERTICAL SECTIONS



OUTSIDE ELEVATION AND HORIZONTAL SECTIONS



THIS OPTION NOT TO BE USED WITH GLAZED IN FIXED LIGHTS

* For glazing options see section 9 of this manual.

DETAIL R
DETAIL N (opposite hand)

